

"After several years of design engineering experience, and the migration to 3D CAD, the use of **EON Studio** is what I might describe as a "**freeing experience**". The static 3D models that I have been building for all this time can finally come to life."

Pat Heder, Vice President, Hybrid Concepts



What is EON Studio™?

EON Studio is an authoring tool for developing interactive 3D applications. With EON Studio users of all experience levels can **quickly** and **easily** build complex, **high-quality interactive applications**. **No programming experience** is required. Whether you create 3D applications for architecture, marketing or training use, EON Studio provides a unique range of benefits and functionality making it a preferred choice.

"Using EON Studio we have been able to **decrease production time** spent developing configurators with **complex interactivity and functionality**. The benefits for our customers such as **Office Depot** are significantly increased using complex EON based configuration applications."

Mr. Paul Scholtes, President, realityBUY



"We were **extremely impressed** both with EON Studio's capabilities to import **light rendered models** and the ability to be able to fly through and **interact in real time**. We believe that the capability to view such models **over the Internet** will open new possibilities for our firm, both for internal usage and for customer presentations."

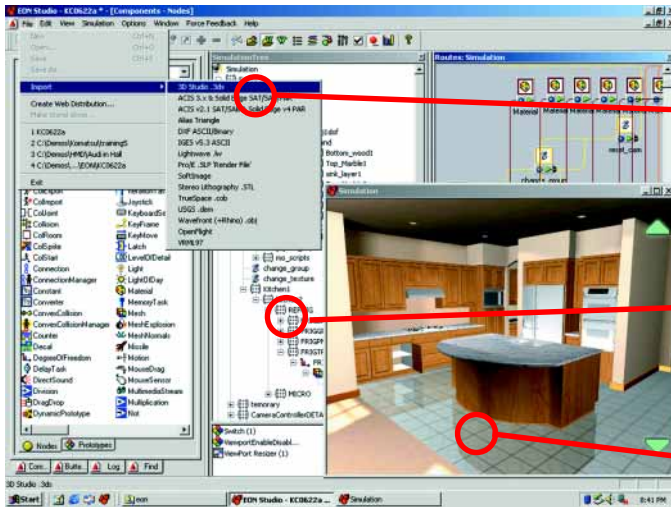
Mr. Ryan Ghere, Architectural Analyst,
Taylor Woodrow

Key Advantages

- **Easy to use** graphical authoring tool allowing non-programmers to add complex interactive effects.
- **Easy import** of most generic CAD and 3D formats, allowing easy use and manipulation of objects and textures from a wide range of 3D modeling tools.
- **Pre-programmed interactive node functionality** that minimizes development time for new applications.
- **Graphical User Interface based web publisher** that makes it easier to embed EON Applications with rich communication to web pages.
- **Re-usable content** where changes can be implemented with the click of a mouse compared with costly changes using linear media such as video.
- **Compact file format** due to effective proprietary compression algorithms and subdivision technology.
- **High rendering quality** - EON offers a superb visual quality.
- **Easy to integrate** with other standard software.
- **Training functionality** with nodes for creation of training applications, both for instruction, practice and assessment.

*"EON Studio software has been used to develop a **revolutionary 3D training application** prototype for Bank of America in which tellers learn how to handle money transactions and customer service."*

Ms. Tracy Barrett, Vice President, Advanced Training Solutions, Bank of America

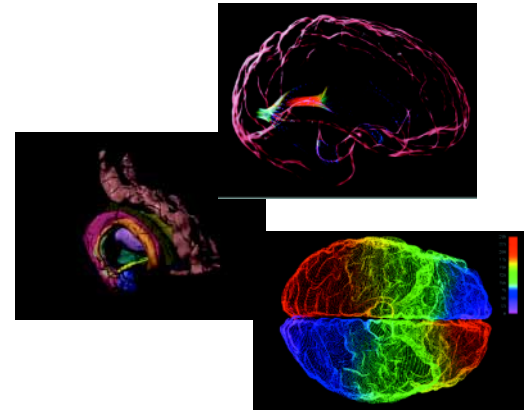


EON Studio Workflow, Easy as 1, 2 and 3!

- 1. Import** - the development process includes importing different 3D objects, usually originating from modeling tools like 3D Studio Max, DXF, LightWave, Lightscape, etc. or from different CAD systems such as ArchiCAD, ProE or CATIA.
- 2. Add behaviors** - once imported, behaviors can easily be associated with the models through EON Studio's intuitive graphical user interface by dragging and dropping nodes and clicking to add interactive behavior.
- 3. Deploy** - the application can be instantly deployed over the Internet using the EON Studio Web Publisher or as stand-alone e.g. a CD-ROM.

Key Features

- **Import formats** include, for example: 3D Studio, ArchiCAD, VRML2 (incl. keyframes), DXF and LightWave (total of 16 formats supported). All bitmaps (textures) are converted to suitable formats (.jpg, .png or .ppm) when importing.
- **Over 100 nodes** with functionality such as motion models, sensors, operations, showroom, special FX, etc.
- **Script node using Java-script or VB-script** enhance the functionality of EON Studio to unlimited features.
- **Real Time Rendering** features include proprietary developed algorithms for anti-aliasing, transparency, environment mapping, shading, reflections, shadows, etc.
- **Integration capability** with other standard software such as Internet Explorer, Netscape, Macromedia Director, Shockwave, Flash, PowerPoint, Word, and Visual Basic.
- **Training** features include, nodes for assembly/disassembly, instructions in text or audio and evaluation of performance etc.
- **Collision detection** and rigid body dynamics module allowing for development of intuitive and "life-like" user interfaces.
- **Small component based plug-in** architecture.



"The ease of use and intuitive nature of EON Studio has allowed its seamless integration into our production pipeline for 3D high resolution visualization of brain imaging data."

John Bacheller, Director of Scientific Visualization, UCLA School of Medicine